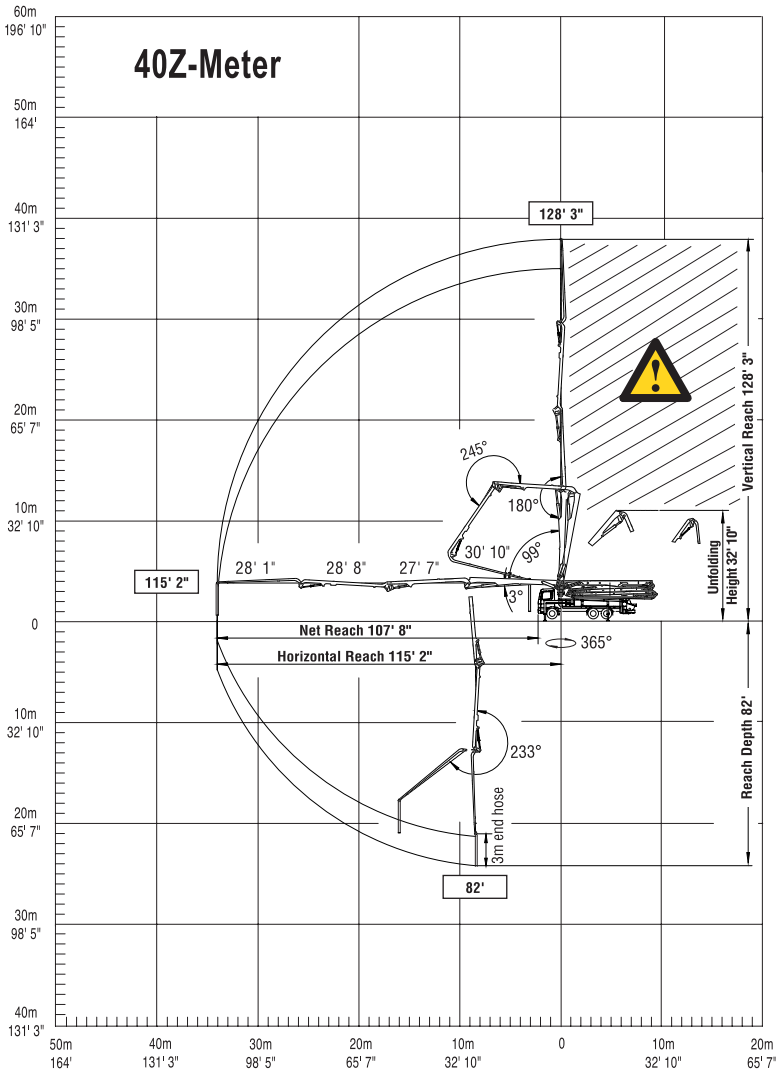
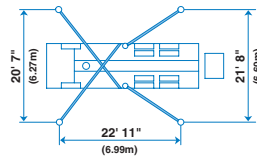


Range Diagram



End hose not to be operated in caution area.

Photos and drawings are for illustrative purposes only. For available options, please refer to price list.



Authorized Distributor



Putzmeister America, Inc.
1733 90th Street
Sturtevant, WI 53177 USA
Telephone (262) 886-3200
(800) 884-7210
Facsimile (262) 884-6338
www.putzmeister.com



12

40Z-Meter Truck-Mounted Specifications

Based on Model MACK MRU 688S with .16H pump cell

| | | |
|----------------------|------------|------------|
| Length | 39' 10" | (12.15m) |
| Width | 8' 2" | (2.50m) |
| Height | 12' 10" | (3.92m) |
| Wheelbase | 215" | (5,461mm) |
| Front axle weight | 18,679 lbs | (8,473kg) |
| Rear axle weight | 37,071 lbs | (16,815kg) |
| Approx. total weight | 55,750 lbs | (25,288kg) |

Weights are approximate and include pump, boom, truck, full hydraulic oil, driver and some fuel. Varies with options selected.

Dimensions will vary with different truck makes, models and specifications.

Boom Specifications • Multi-Z Design

| Height & Reach | | |
|----------------------------|---------|----------|
| Vertical reach | 128' 3" | (39.09m) |
| Horizontal reach | 115' 2" | (35.10m) |
| Reach from front of truck* | 107' 8" | (32.82m) |
| Reach depth | 82' | (24.99m) |
| Unfolding height | 32' 10" | (10.01m) |

| 4-Section Boom | | |
|--------------------------|---------|---------|
| 1st section articulation | 99° | |
| 2nd section articulation | 180° | |
| 3rd section articulation | 245° | |
| 4th section articulation | 233° | |
| 1st section length | 30' 10" | (9.40m) |
| 2nd section length | 27' 7" | (8.41m) |
| 3rd section length | 28' 8" | (8.74m) |
| 4th section length | 28' 1" | (8.56m) |

| General Specs | | |
|-----------------------------------|---------------------------------------|---------|
| Pipeline size (ID) metric ends | 4.6" | (117mm) |
| Rotation | 365° | |
| End hose — length | 10' | (3m) |
| End hose — diameter (lightweight) | 4.5" | (115mm) |
| Outrigger spread L - R — front | 20' 7" | (6.27m) |
| Outrigger spread L - R — rear | 21' 8" | (6.60m) |
| | hydraulically swing out & extend down | |

| Pump Specifications | | |
|--------------------------------------|---|--|
| 40Z.16H | | |
| Output — rod side | 210 yd ³ /hr (160m ³ /hr) | |
| Output — piston side | 146 yd ³ /hr (112m ³ /hr) | |
| Pressure — rod side | 1233 psi (85 bar) | |
| Pressure — piston side | 1885 psi (130 bar) - | |
| Material cylinder diameter | 9" (230mm) | |
| Stroke length | 83" (2100mm) | |
| Max strokes per minute — rod side | 31 | |
| Max strokes per minute — piston side | 21 | |
| Volume control | 0-Full | |
| Vibrator | Standard | |
| Hard-chromed material cylinders | Standard | |
| Hydraulic system | Free Flow | |
| Hydraulic system pressure | 5075 psi (350 bar) | |
| Differential cylinder diameter | 5.5" (140mm) | |
| Rod diameter | 3.1" (80mm) | |
| Maximum size aggregate | 2.5" (63mm) | |
| Water tank | 185 gal (700L) | |

Maximum theoretical values listed.

* Applies to units mounted on PMA stock truck — MACK MRU 688S

* Standard delivery line system rated at max line pressure of 1233 psi (85 bar)